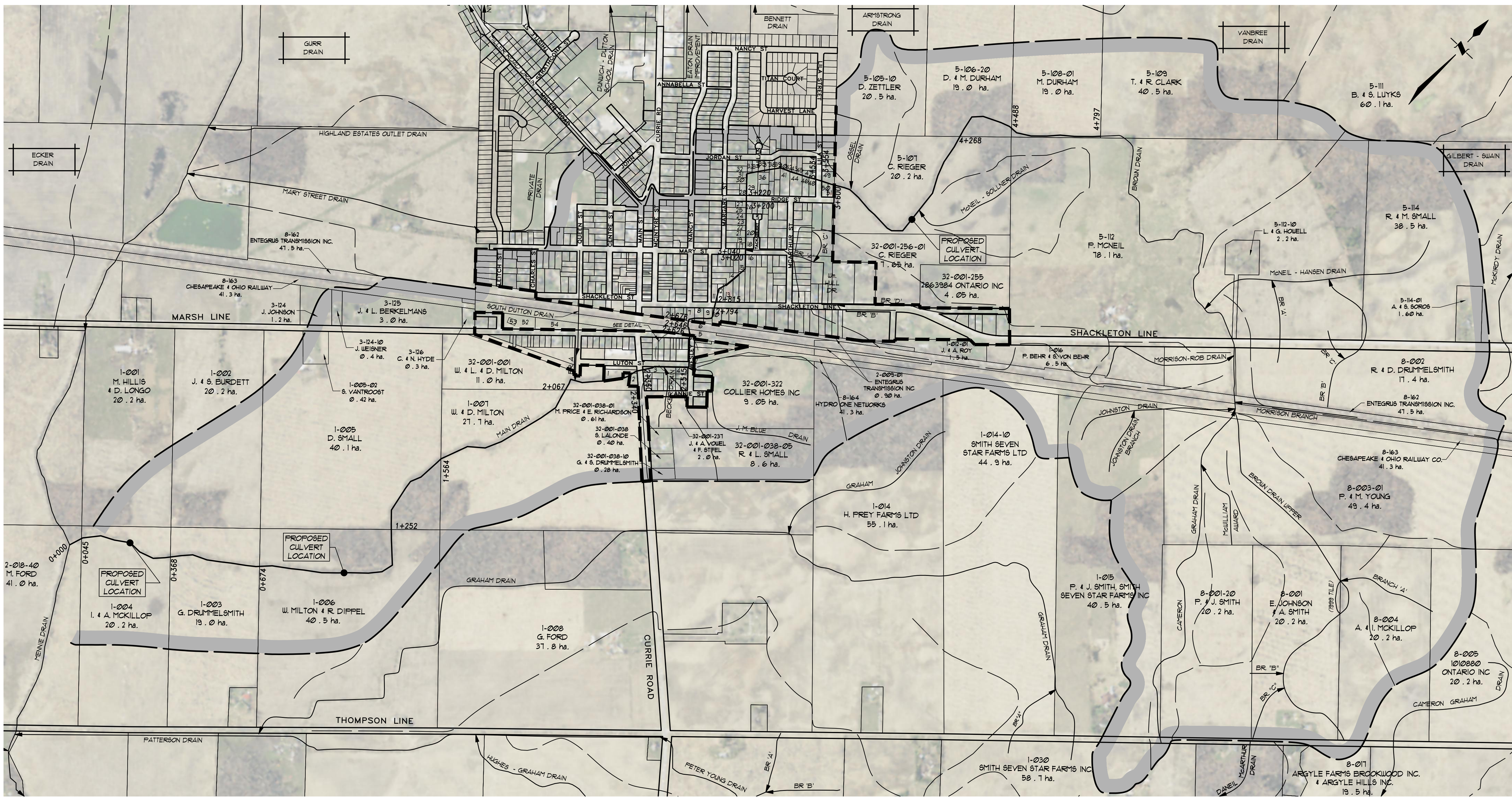


CON. A
CON. 5 S. OF A
CON. 6



LOT LEGEND		
ROLL No.	OWNERSHIP	HECTARES OWNED
1)	32-001-002-01 DUNWICH TOWNSHIP	0.30
2)	32-001-002 S. & C. SABO	0.17
3)	32-001-001-11 HYDRO ONE NETWORKS INC.	0.17
4)	32-001-320-02 D. & K. SMEDLEY	0.08
5)	32-002-008 CHESAPEAKE & OHIO RAILWAY	8.74
6)	32-002-009 CANADIAN NATIONAL RAILWAY	10.0
7)	32-001-282 M. MCCONNELL & C. BROWN	0.12
8)	32-001-281 BELL CANADA & PROPERTY TAX DEP	0.15
9)	32-001-282-01 J. OKULISAN & L. WEBBER	0.15
10)	32-001-283 W. & L. SUTTON	0.16
11)	32-001-272 2006430 ONTARIO LIMITED & A. DAVID	0.12
12)	32-001-271 2006430 ONTARIO LIMITED	0.12
13)	32-001-270 F. & M. VAN ZYL	0.21
14)	32-001-371 J. HOWSE	0.22
15)	32-001-301 S. JACKSON	0.12
16)	32-001-302 D. & F. WAGENAR	0.15
17)	32-001-311-01 J. & D. WHITTINGTON	0.06
18)	32-001-311 J. & B. WHIDLING	0.11
19)	32-001-397 B. SANDERSON	0.14
20)	32-001-310-02 D. & K. SCHEELE	0.24
21)	32-001-396 R. & M. MANCHESTER	0.14
22)	32-001-395 L. & J. PATON	0.14
23)	32-001-394 D. WALKER	0.14
24)	32-001-393 L. WELCH & J. MCLEAN	0.14
25)	32-001-392 G. EVANS	0.14
26)	32-001-314-03 T. RICHE	0.08
27)	32-001-313-01 B. UUTLUUT	0.08
28)	32-001-388-01 R. D. CUCKSEY	0.10
29)	32-001-319 R. & A. MACDONALD	0.30
30)	32-001-389-02 J. HADLER	0.14
31)	32-001-389-03 S. CRAWFORD & K. MILLIGAN	0.14
32)	32-001-389-04 M. & S. O'BRIEN	0.14
33)	32-001-319-02 J. & S. MCINTYRE	0.08
34)	32-001-319-04 S. SANDERCOTT & N. COLLARD	0.08
35)	32-001-319-06 C. FORD	0.07
36)	32-001-319-01 B. & L. POWELL	0.08
37)	32-001-319-08 K. MCKENZIE	0.07
38)	32-001-317-08 W. DOUGHERTY	0.19
39)	32-001-317-06 1010930 ONTARIO LTD.	0.14
40)	32-001-316-05 1010930 ONTARIO LTD.	0.08
41)	32-001-316-30 A. & C. BACHMEIER	0.38
42)	32-001-316-06 1010930 ONTARIO LTD.	0.08
43)	32-001-316-07 1010930 ONTARIO LTD.	0.08
44)	32-001-316-20 R. & E. PEACOCK	0.18
45)	32-001-316-08 1010930 ONTARIO LTD.	0.08
46)	32-001-316-65 D. & L. MURRAY	0.19
47)	32-001-317-85 J. & P. CRANNER	0.12
48)	32-001-316-55 C. SMITH & D. SMALL	0.15
49)	32-001-316-75 R. & B. TRUDELL	0.16
50)	32-001-316-45 R. & B. MYERS & B. SMALL	0.12
51)	32-001-316-35 K. & G. WATSON	0.11
52)	32-002-008-01 CHESAPEAKE & OHIO RAILWAY	0.43
53)	32-002-008-02 CHESAPEAKE & OHIO RAILWAY	0.05
54)	32-002-008-03 CHESAPEAKE & OHIO RAILWAY	0.45

PLAN SCALE 1 : 1,500

GENERAL NOTES

- OUR SPECIFICATIONS DATED JANUARY 2020 APPLY TO THIS PROJECT.
- THE WORKING WIDTH AVAILABLE TO THE CONTRACTOR TO CONSTRUCT THE NEW DRAINS SHALL CONSIST OF THOSE LANDS IMMEDIATELY ADJACENT TO THE DRAIN AND CONNECTIONS AND SHALL NOT EXCEED THE FOLLOWING AVERAGE WIDTHS:
OPEN PORTIONS - 18 METERS (INCLUDING 3m BUFFER)
OPEN PORTIONS (IN TOWN) - 8 METERS
THE WORKING WIDTH FOR PURPOSES OF FUTURE MAINTENANCE SHALL BE 10m.
EXCEPT FROM STA. 2 + 676 TO STA 3 + 600 (IN TOWN) WHICH SHALL BE 8m.
- ALL OWNERS ALONG THE COURSE OF THE DRAIN SHALL MAKE AN ACCESS ROUTE FROM THE NEAREST ROAD TO THE DRAIN LOCATION AVAILABLE TO THE CONTRACTOR THE AVERAGE WIDTH OF THIS ROUTE SHALL NOT EXCEED 8 METERS. THE ACCESS ROUTE SHALL ALSO APPLY FOR FUTURE MAINTENANCE PURPOSES.
- a) ALL UTILITIES TO BE LOCATED AND EXPOSED PRIOR TO CONSTRUCTION SO THAT THE NEW TILE GRADES CAN BE CONFIRMED. IF THERE IS A CONFLICT IN ELEVATION BETWEEN THE PROPOSED DRAIN AND THE UTILITY, THE ENGINEER IS TO BE NOTIFIED IMMEDIATELY.
b) CONTRACTOR TO NOTIFY ALL UTILITIES 12 HOURS PRIOR TO HIS SCHEDULED TIME FOR STARTING THE ABOVE WORK.
c) THE COST FOR THIS WORK SHALL BE INCLUDED IN THE ITEM ON THE EXTENT OF WORK AND NO EXTRA PAYMENT SHALL BE MADE TO THE CONTRACTOR, EXCEPT IF ROAD RESTORATION IS REQUIRED.
- ALL TREES, SCRUB, BRUSH, ETC. TO BE CLEARED AND GRUBBED IN ACCORDANCE WITH "SECTION B.3 AND C.4" SPECIFICATIONS.
- RIP-RAP TO BE SUPPLIED AND INSTALLED IN ACCORDANCE WITH "SECTION A.28" IN THE SPECIFICATIONS.
- CONTRACTOR TO ARRANGE A PRE-CONSTRUCTION MEETING WITH THE ENGINEER, DRAINAGE SUPERINTENDENT, AND THE AFFECTED OWNERS. ALL PARTIES SHALL RECEIVE 48 HOURS NOTICE TO THE MEETING.

OPEN PORTIONS

- A 3 METER WIDE BUFFER STRIP OF NEW & EXISTING VEGETATION BETWEEN THE TOP OF THE BANK AND THE CULTIVATED LANDS ON WEST SIDES OF THE DITCH SHALL BE MAINTAINED AS PART OF THE OPEN PORTION OF THE DRAIN.
- NEWLY EXPOSED DITCH BANKS ARE TO BE HAND SEEDING UPON COMPLETION OF CONSTRUCTION IN ACCORDANCE WITH "SECTION B.11" IN THE SPECIFICATIONS.
- SILT FENCE TO BE PLACED ACROSS DITCH BOTTOM AT STA. 0 + 000 DURING CONSTRUCTION TO PREVENT SILT FROM FLUSHING DOWNSTREAM, AND ARE TO BE MAINTAINED AS NECESSARY DURING CONSTRUCTION. SILT FENCE AND SILT TO BE REMOVED AND DISPOSED OF AFTER CONSTRUCTION.
- OPEN DRAIN FROM STA. 0 + 000 TO 2 + 391 & FROM STA. 3 + 600 TO 4 + 791 DRAIN TO BE MECHANICALLY BRUSHED.
OPEN DRAIN FROM STA. 3 + 200 TO 3 + 600 TO BE BRUSHED USING SMALL EQUIPMENT TO MINIMIZE DISTURBANCE TO ADJACENT LANDS, AND UNDERTAKEN IN WINTER MONTHS WHEN GROUND IS FROZEN.
- CLEANOUT & BRUSHING TO BE UNDERTAKEN FROM THE FOLLOWING SIDES:
STA. 0 + 000 TO 2 + 281 - SOUTH SIDE
STA. 2 + 281 TO 2 + 391 - NORTH SIDE
STA. 3 + 266 TO 3 + 410 - SOUTH & EAST SIDE
STA. 3 + 410 TO 4 + 291 - NORTH SIDE

PLAN LEGEND

- LIMIT OF WATERSHED AREA
- PROPOSED DRAINAGE WORKS
- EXTERIOR OR INTERIOR WATERSHED
- TO BE INCLUDED FOR FUTURE MAINTENANCE
- EXIST. MUNICIPAL DRAIN
- PRIVATE TILE OR SURFACE WATER RUN
- AREA TO BE BLOCK ASSESSED
- 10 ± 000 ASSESSMENT ROLL NUMBER
- 2 ± 000 OWNERS NAME
- 40 ± 000 HECTARES OWNED

BROWN DRAIN

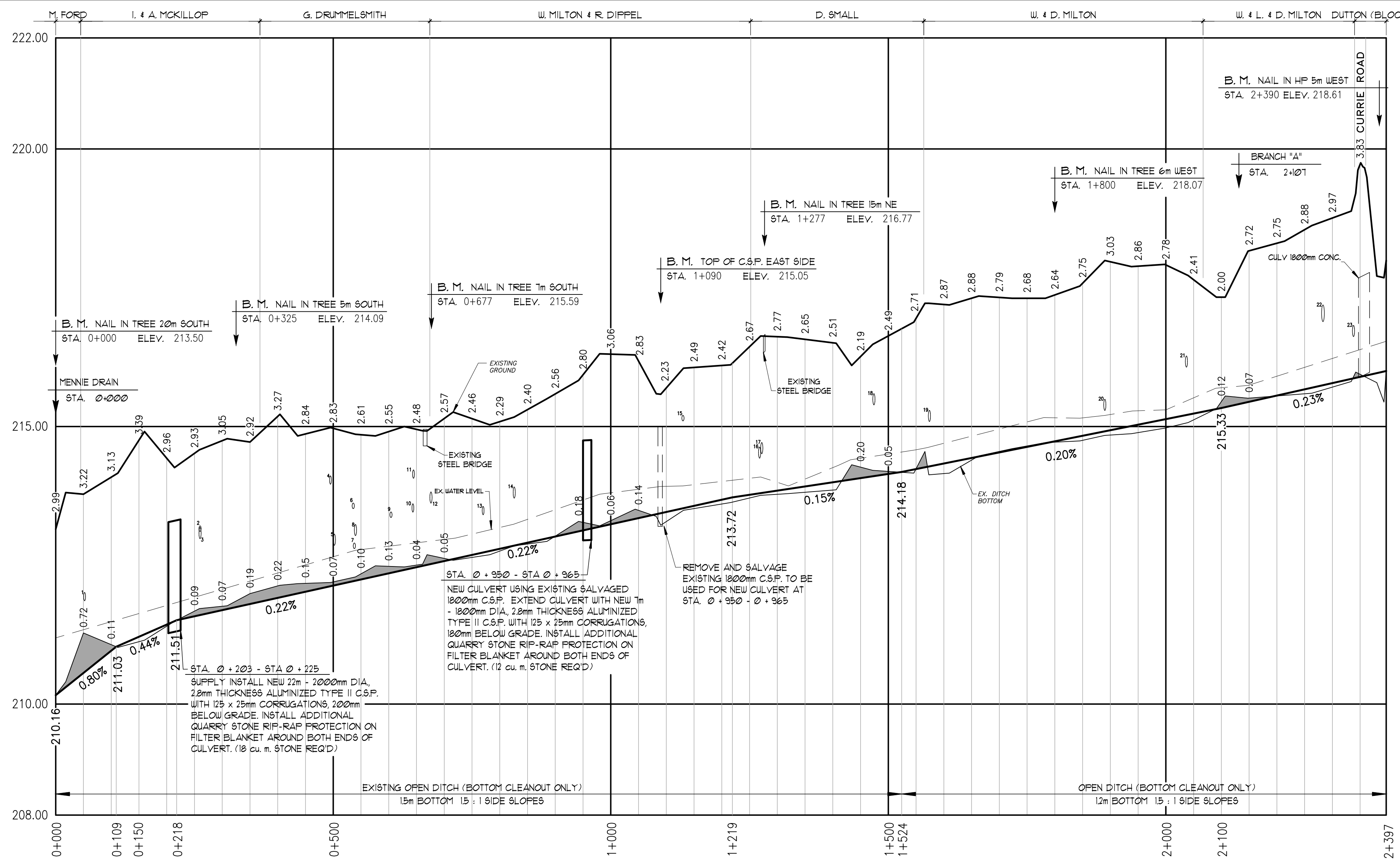


Drainage Superintendent:	No.	REVISIONS	DATE
BRENT CLUTTERBUCK			
519 - 762 - 2204			

Drawn By: AP	Field Book	JOB No.	Drawing No.
Date: MAR 01, 2023	G.P.S. / R.T.S.	218191	1 of 3

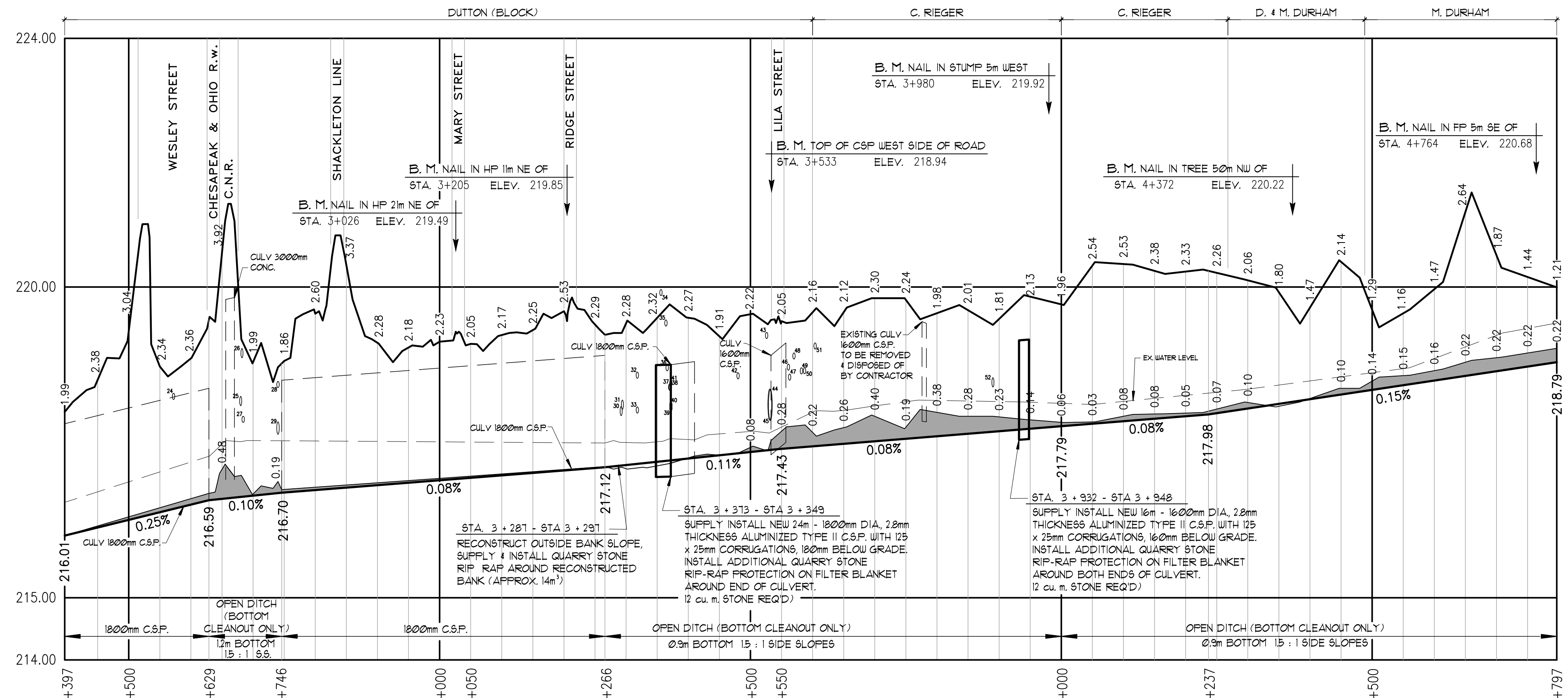


SPRIET ASSOCIATES
LONDON LIMITED
CONSULTING ENGINEERS
155 YORK STREET - LONDON (519) 672-4100 - NEA 1A8



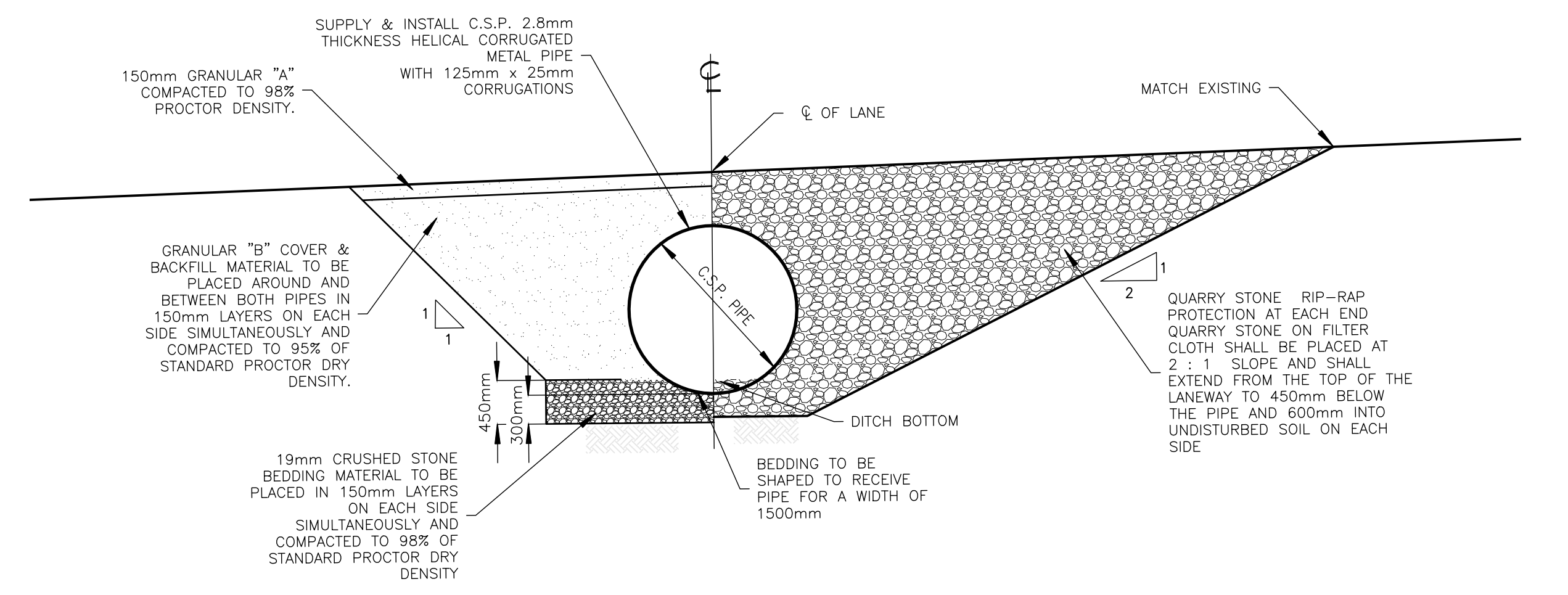
MAIN DRAIN

SCALE: HOR 1:5,000
VERT. 1:50



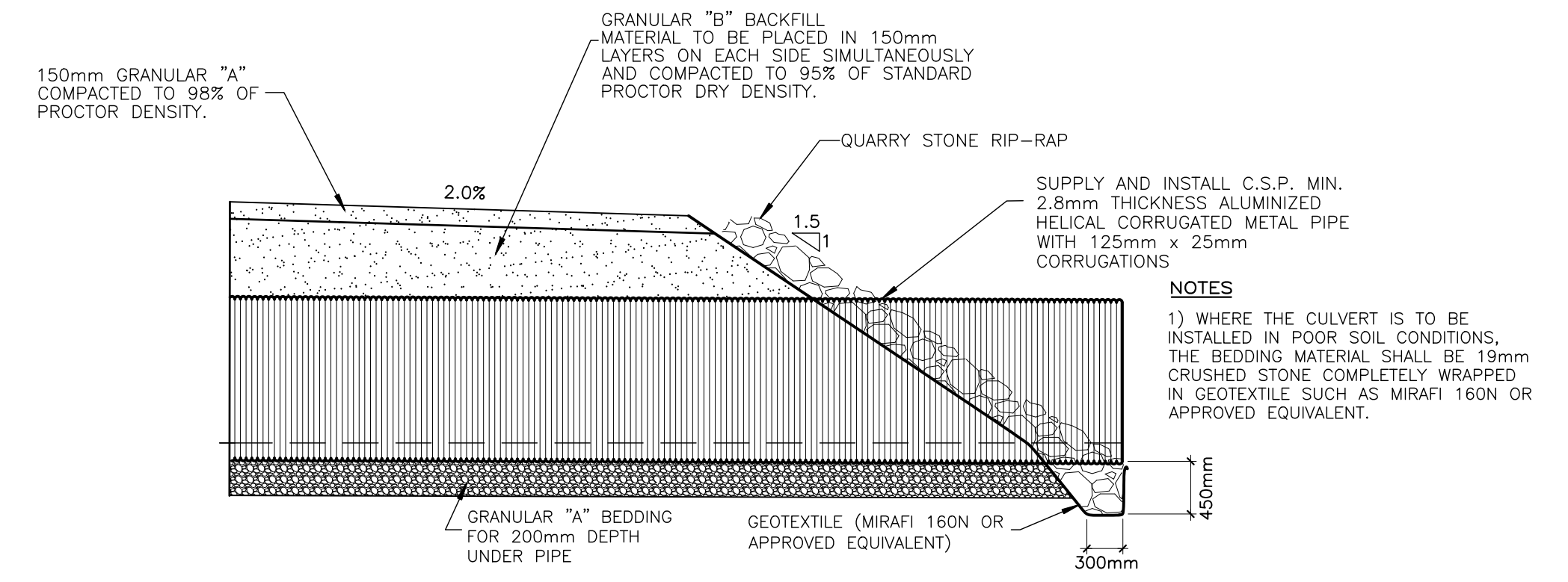
MAIN DRAIN CONTINUED

SCALE: HOR 1:5,000
VERT. 1:50



HALF SECTION HALF ELEVATION

SCALE: 1:50



HALF SECTION THROUGH PIPE

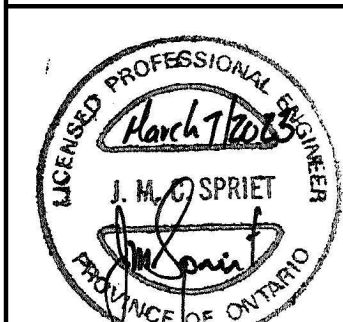
N.T.S.
CULVERT INSTALLATION

TILE OUTLETS			TILE OUTLETS		
SIZE/TYPE	ELEVATION	DIRECTION	SIZE/TYPE	ELEVATION	DIRECTION
1) 150mm HDPE	INV = 211.71	SOUTH	27) 100mm CLAY	INV = 217.82	WEST
2) 100mm HDPE	INV = 213.11	SOUTH	28) 100mm HDPE	INV = 218.38	NORTH
3) 200mm HDPE	INV = 212.98	NORTH	29) 200mm HDPE	INV = 217.63	SOUTH
4) 150mm PLASTIC	INV = 213.96	SOUTH	30) HDPE SIZE UNKNOWN	TOP = 217.93	WEST
5) 200mm HDPE	INV = 212.86	NORTH	31) 150mm STEEL	INV = 218.03	NORTH
6) 100mm HDPE	INV = 213.52	SOUTH	32) 100mm HDPE	INV = 218.53	NORTH
7) 100mm HDPE	INV = 212.80	SOUTH	33) 100mm HDPE	INV = 217.97	NORTH
8) 200mm HDPE	INV = 212.84	SOUTH	34) HDPE SIZE UNKNOWN	TOP = 219.86	NORTH
9) 100mm HDPE	INV = 213.36	SOUTH	35) 100mm HDPE	INV = 218.67	NORTH
10) 150mm HDPE	INV = 213.46	NORTH	36) 100mm HDPE	INV = 219.35	NORTH
11) 150mm HDPE	INV = 214.07	NORTH	37) 100mm HDPE	INV = 218.34	NORTH
12) 200mm HDPE	INV = 213.62	NORTH	38) 100mm HDPE	INV = 218.33	NORTH
13) 150mm HDPE	INV = 213.41	NORTH	39) 100mm HDPE	INV = 218.00	NORTH
14) 200mm CLAY	INV = 213.71	SOUTH	40) 100mm HDPE	INV = 218.05	NORTH
15) 100mm PVC	INV = 215.10	EAST	41) 100mm HDPE	INV = 218.40	NORTH
16) 200mm CSP	INV = 214.43	WEST	42) 100mm HDPE	INV = 218.52	SOUTH
17) 200mm STEEL	INV = 214.51	WEST	43) 100mm PLA	INV = 219.17	NORTH
18) 200mm STEEL	INV = 215.39	NORTH	44) 500mm HDPE	INV = 217.85	NORTH
19) 200mm HDPE	INV = 215.09	NORTH	45) 500mm HDPE	INV = 217.86	SOUTH
20) 200mm CSP	INV = 215.29	SOUTH	46) HDPE SIZE UNKNOWN	TOP = 218.66	WEST
21) 200mm STEEL	INV = 214.83	EAST	47) 100mm HDPE	INV = 218.50	NORTH
22) 300mm CSP	INV = 216.89	NORTH	48) 100mm HDPE	INV = 218.84	NORTH
23) 200mm HDPE	INV = 216.62	NORTH	49) 100mm PLA	INV = 218.60	SOUTH
24) 100mm HDPE	INV = 218.19	EAST	50) HDPE SIZE UNKNOWN	TOP = 218.29	NORTH
25) 150mm STEEL	INV = 218.09	WEST	51) 100mm PLA	INV = 219.00	SOUTH
26) 150mm STEEL	INV = 218.86	WEST	52) 150mm HDPE	INV = 218.39	EAST

BROWN DRAIN

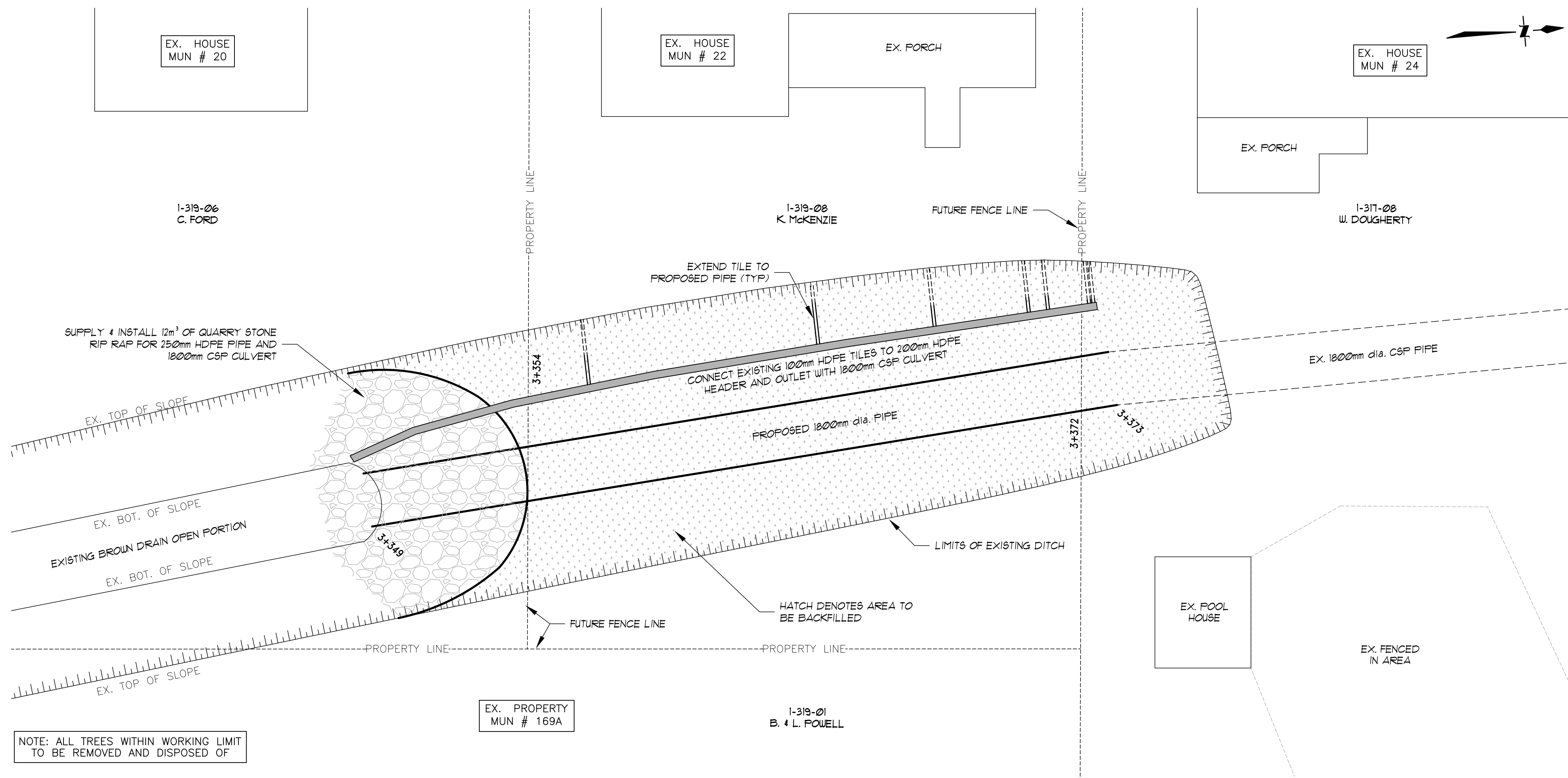
Municipality of
Dutton Dunwich

Drainage Superintendent:	No.	REVISIONS	DATE
BRENT CLUTTERBUCK			
519 - 762 - 2204			

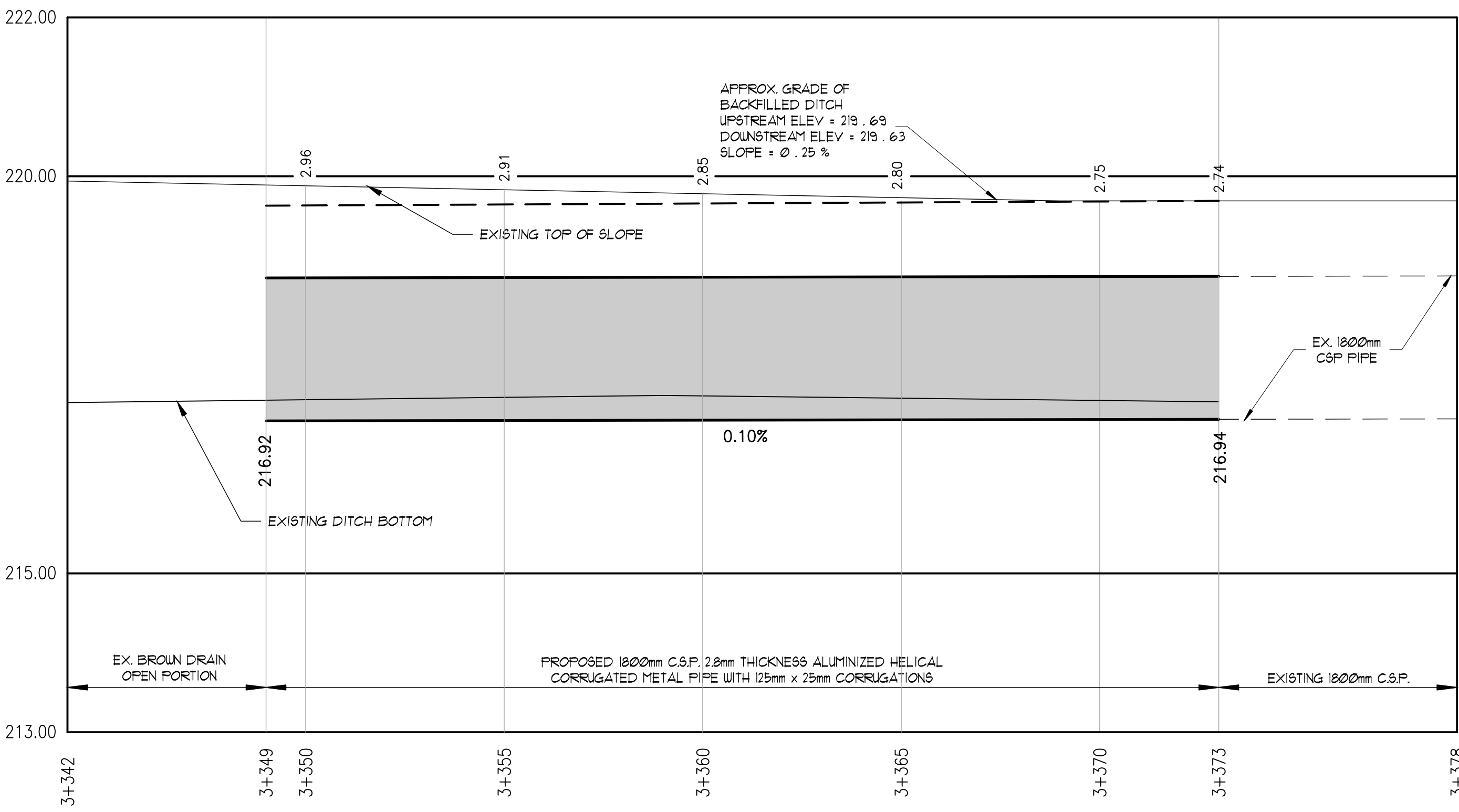


Drawn By: AP	Field Book	JOB No.	Drawing No.
Date: MAR 01, 2023	G.P.S. / R.T.S.	218191	2 of 3

SPRIET ASSOCIATES
LONDON CONSULTING ENGINEERS LIMITED
155 YORK STREET - LONDON (519) 672-4100 - NEA 1A8



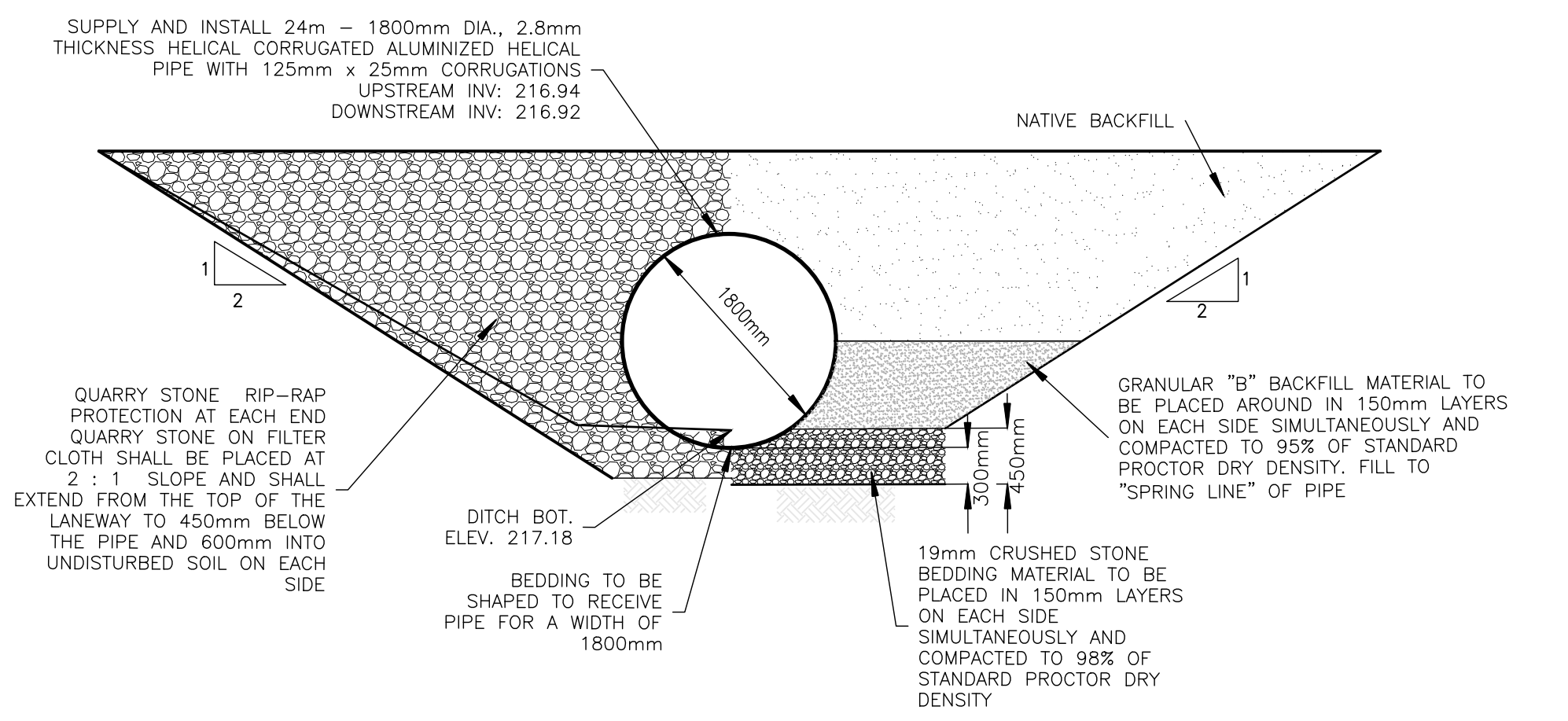
PLAN SCALE 1 : 100



ENCLOSURE
SCALE : HOR 1 : 100
VERT. 1 : 50



ACCESS OPENING DETAIL SCALE 1 : 500



HALF SECTION **HALF ELEVATION**
N.T.S.

BROWN DRAIN

Municipality of
Dutton Dunwich

Drainage Superintendent: BRENT CLUTTERBUCK 519 - 762 - 2204	No.	REVISIONS	DATE
Drawn By: AP Date: MAR 01, 2023	Field Book G.P.S. / R.T.S.	JOB No. 218191	Drawing No. 3 of 3

PLAN, PROFILE, & DETAILS

SPRIET ASSOCIATES
LONDON CONSULTING ENGINEERS LIMITED
155 YORK STREET - LONDON (519) 672-4100 - NEA 1A8

